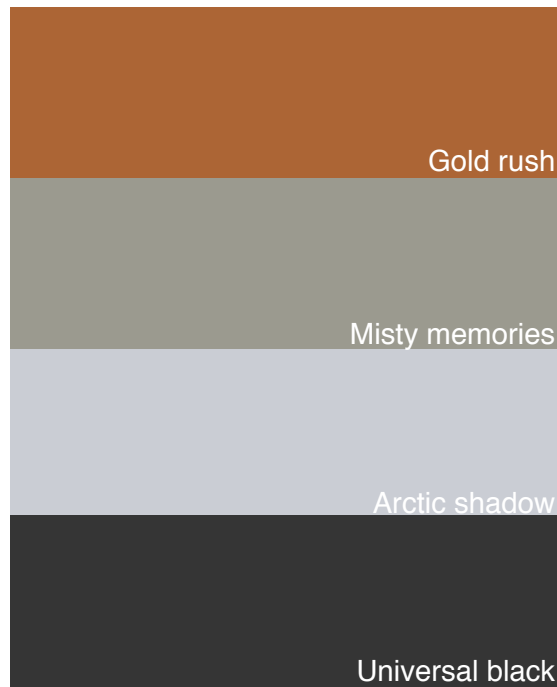


INDOOR CONCRETE STYLES

**MODERN PALETTE**

Interpretations of modern style vary from utilitarian and industrial to sleek and bold. Concrete can achieve all of these modern design variations by permitting large geometrical patterns and shapes, while conveying an industrial look using subtle shades of gray.

COLORS + FINISHES



KEY DETAILS

You can achieve a modern style using concrete by incorporating elements of these four design principles:

**SLEEK & CLEAN**

Use simple, unfussy details and finishes, such as straight edges and polished surfaces.

**GEOMETRIC SHAPES**

Stick with basic rectangular shapes, and add interest by using asymmetrical arrangements.

**MONOCHROMATIC COLOR SCHEME**

Use concrete in white or various shades of gray as a backdrop for accents of bold color.

**ABSTRACT DECOR**

Accent rooms with furniture, artwork, and vases in geometric shapes and modern materials, such as stainless steel and glass.

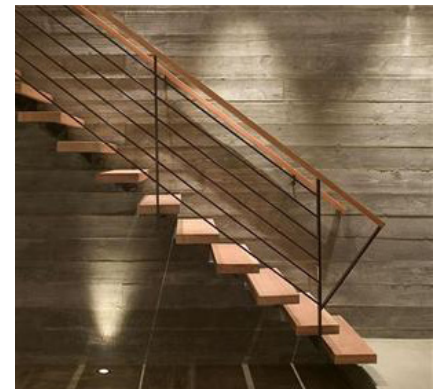
INDOOR MODERN ELEMENTS



Furniture



Fireplace surrounds



Interior walls



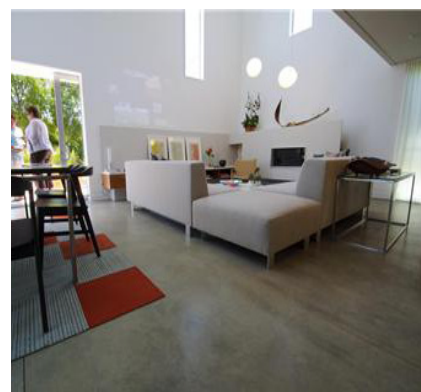
Countertops



Sinks



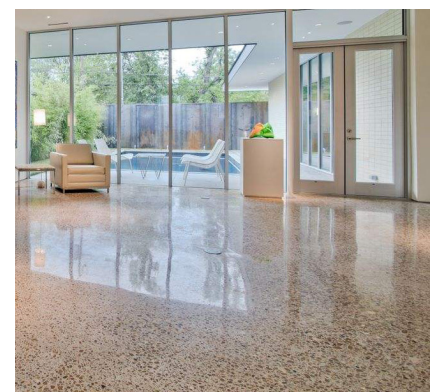
Tubs & showers



Floors



Garage floors



Polished concrete

TEXTURES



Smooth slate



Charcoal exposed aggregate



Classic Concrete Design  
Inspire to Create

Contact us for a free quote!

919.272.2072